

INVERSE FUNCTIONS

MATH 73

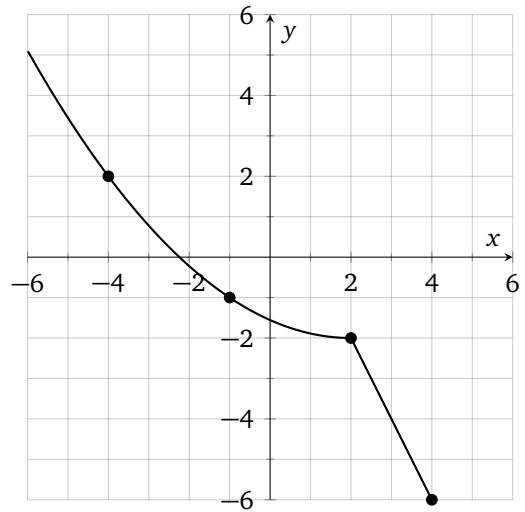
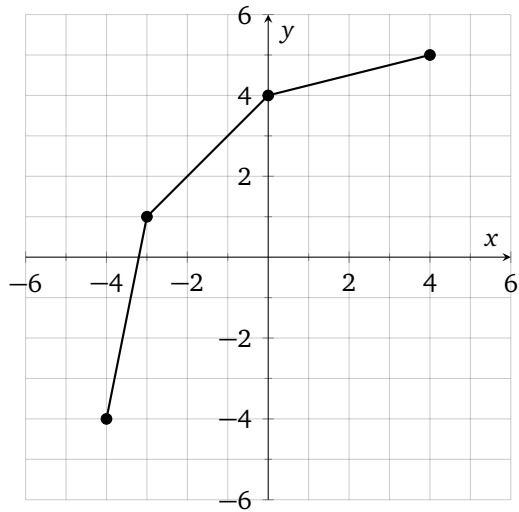
LAST NAME	FIRST NAME	DATE
-----------	------------	------

1 (4 points). Find an expression for the inverse function for each of the given ones:

(a) $F(x) = -\frac{3}{2}x + 6$

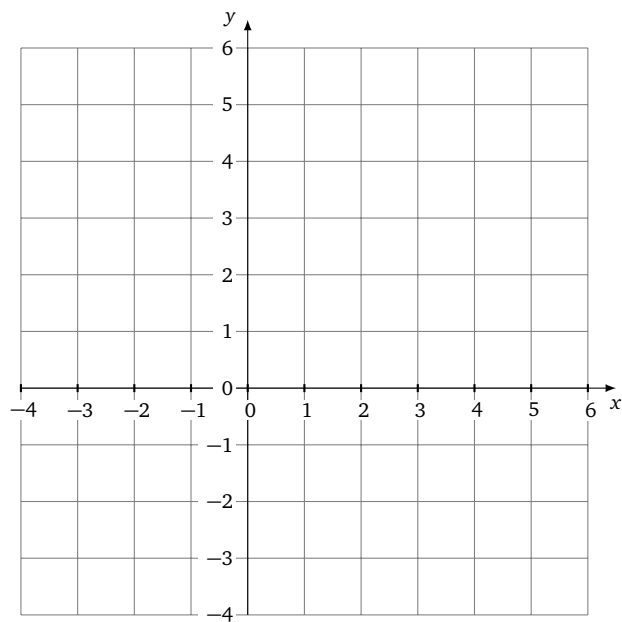
(b) $G(x) = \frac{(x-1)^3}{8}$

2 (2 points). Plot the inverse of the given function.



3 (6 points). Given the function $H(x) = \sqrt{x+2} + 1$, use the provided grid to

- Plot the graph of $H(x)$
- Plot the graph of the inverse function $H^{-1}(x)$



(c) Find an expression for $H^{-1}(x)$